

SAACB-The South African Association of Clinical Biochemistry

VOLUME 2, ISSUE 2

APRIL 2009

POINTS OF INTEREST:

- Pathology Congress 2009
- Why join the SAACB? Benefits of membership
- Pillay's Posers—challenging problems for the the trainee

INSIDE THIS ISSUE:

Call for award applications 2009

Pillay's Posers 3

Retrospecto-scope 4



PathTech 2009

Date : 6 - 10 September 2009
Venue : ICC Durban

This year the Pathology Congress has been combined with the Technologist Congress and will take place at the Durban International Convention Centre from 6-10 September 2009. The meeting will combine the Society of Medical Laboratory Technologists of South Africa, FSASP and the South African Society of Clinical Cytology. The meeting is being organized by the University of the Free State this year. Registration for PathTech2009 is now open. Please visit:

www.pathtechcongress.co.za/ for further details. As in previ-

ous years the daughter society SAACB Annual conference will be hosted under the umbrella of the Pathology Congress., A training day is planned for Sunday 6 September.

Abstract deadline: 23 June 2009

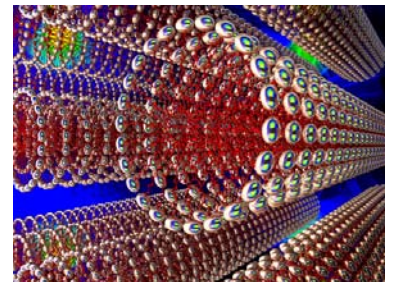
Registration deadline: 6 August 2009

Satellite workshop:

The SAACB will be running a Laboratory Management Workshop at the University of Kwazulu Natal campus from Friday 4 September to Sunday 6 September. The convenors are Prof Pillay (UCT), Prof Erasmus

(Stellenbosch); Dr P. Naidoo (UKZN and Albert Luthuli). For further details contact skrige@sun.ac.za or cpy-secretary@uct.ac.za.

The previous workshop was held at the Cape Peninsula University of Technology on 16-18 May 2008 and covered aspects of laboratory statistics, quality and research methodology.



Join the SAACB-value for money!!!

. The SAACB still offers great value for money. Current membership dues are: R150 (students and registrars); R250 (pathologists and other professionals). In addition, SAACB members are eligible to apply for a number of research and travel awards.

As a paid-up member you can apply for:

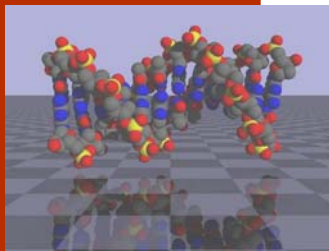
Annual Junior Investigator award (R5000)

Annual Postgraduate Education grant of R2500

International travel grants worth R5000 each. Members are eligible to apply for **IFCC awards**.

New HPCSA rules for scientists

The HPCSA has recently promulgated new rules for the registration of scientists. Susan Cooper presented the recent rules at the 2008 Pathology congress. Diagnostic departments will have to apply for accreditation to train scientists who wish to enter the diagnostic field.



Why join the SAACB? Benefits of membership

-You will meet international speakers in the field each year and get to network

-You will meet leaders and specialists in analytical chemistry from industry

-There is a R1500 prize for the Best Poster at the Congress. Only members are eligible.

-The Best presentation in the field of Cardiovascular Disease receives a free 2 year subscription to the Cardiovascular Journal of South Africa. Editorial comments

will be added to the publication should the study be published by this journal.

Grants and Awards

As a member you will be eligible to apply for:

Annual Junior Investigator award (R5000)

Annual Postgraduate Education grant of R2500

International travel grants worth R5000 each.

Members are eligible to apply for **IFCC awards**.

Don't delay, join or renew your subscription today.

Email: cpy-secretary@uct.ac.za for more information



Applications for 2009 Awards

BECKMAN POST-GRADUATE BURSARY (R3000)

This award is intended to encourage individual research initiative in younger members, the criteria being research potential and academic excellence.

The award may be used for purposes such as defrayment of expenses on thesis/

ROCHE DIAGNOSTICS YOUNG RESEARCHER AWARD (R5000)

This award will be made to a member of less than 36 years of age who is the first author of the best publication made in the 2007 calendar year.

Submissions for these awards should be accom-

panied by a covering letter detailing present/future clinical/medical relevance and the contribution made by each of the authors. Applicants must be members of the SAACB.

paper, congress attendance, study leave, purchase of computer or other essential items.

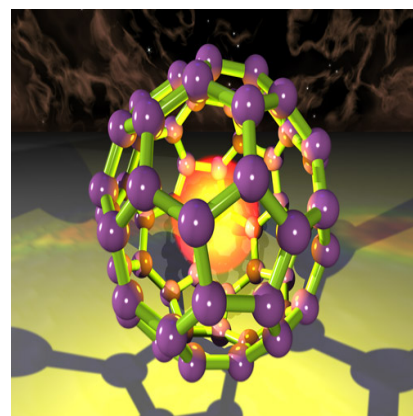
Applicants should submit a brief CV, a summary of research in progress and a motivation for the proposed use of the award. Applicants must be registered postgraduate students and members of the

SAACB. A letter of support from their Head of Department should also be included.

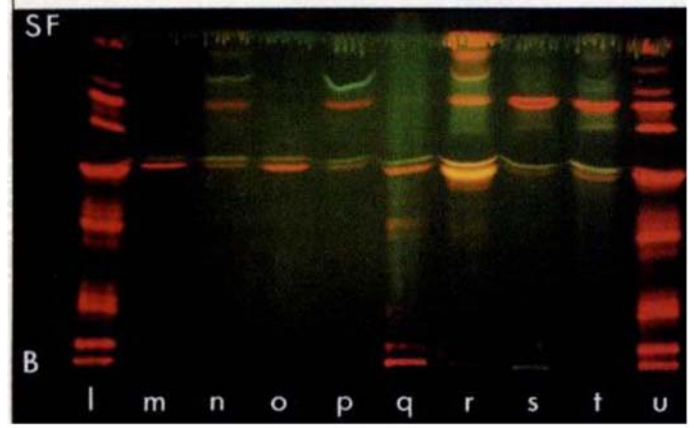
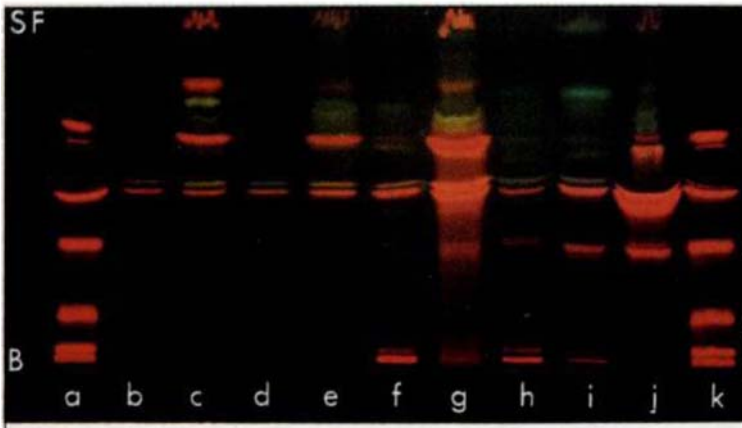
Submit electronic applications by **30 June 2009** to: Prof T. Pillay, cpy-secretary@uct.ac.za

panied by a covering letter detailing present/future clinical/medical relevance and the contribution made by each of the authors. Applicants must be members of the SAACB.

Submit electronic applications by **30 June 2009** to: Prof T. Pillay, cpy-secretary@uct.ac.za



Pillay's Posers



Urine and faecal porphyrins were analysed by TLC in chloroform/methanol/ammonia/water.

Based on your knowledge of the chemistry of porphyrins, please provide an interpretation of the TLC patterns.

The TLC plates were photographed under UV light.

Lanes:

a, k, l, u standards

B, d, m, o, = urine controls

C, e, n, p= control faeces

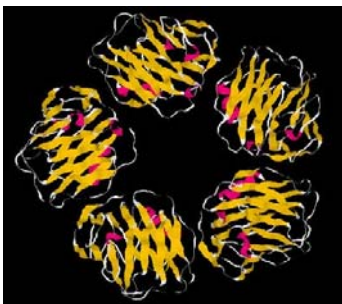
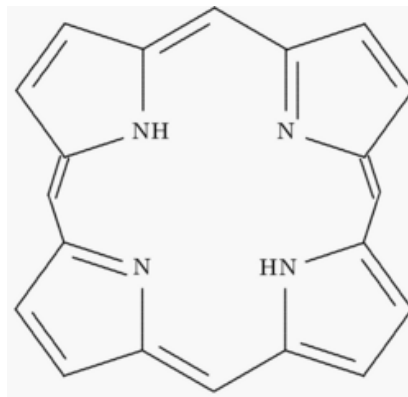
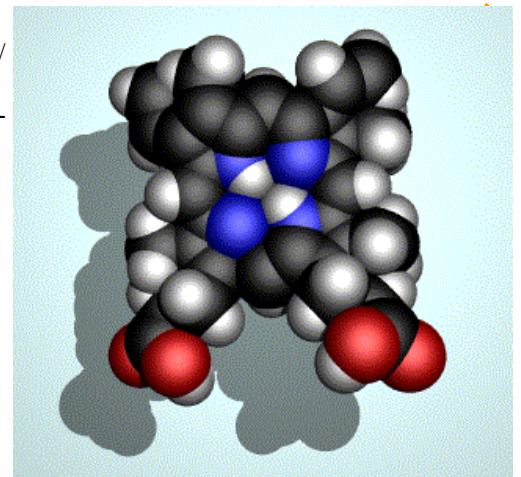
f & g = urine and faeces in suspected porphyric in acute attack

h, i=urine from patient acute attack

j, faeces from suspected porphyric in acute attack

q, r = urine and faeces from suspected chronic porphyria

SF= solvent front



A well known analyte is shown above– what is it?

Catecholamines can be converted to fluorescent compounds (lutines) by oxidation and treatment with alkali. The concentration can then be determine by excitation at 405 nm and fluorescence intensity measurements at 495 nm.

(These two wavelengths do not discriminate between adrenaline and noradrenaline).

Given the following data for 1.5 ml urine:

I_u = fluorescence intensity of urine treated to induce fluorescence of catecholamines = 52 Units

I_b=fluorescence intensity of urine treated with ferricyanine, NaOH and the other reagents in the wrong order (so as not to induce fluorescence) = 6 Units

I_s=fluorescence intensity of urine containing 0.25 µg of adrenaline standard = 85 Units

Calculate:

a) Concentration of catecholamines in the urine in the sample;

b) Total daily catecholamine excretion if the 24 hour urine volume is 900 mls.

About the SAACB



The South African Association for Clinical Biochemistry is dedicated to the promotion of Clinical Biochemistry and Chemical Pathology in Africa. The SAACB is affiliated to the IFCC. The membership of the association is open to scientists, technologists and medical personnel who have an interest in diagnostic clinical chemistry and chemical pathology.

In addition, corporate membership is also available to any interested corporate bodies and companies. The Association provides a forum for intellectual and scientific interchange, is responsible for organising and contributing to the annual South African Pathology Congress and also makes available a number of educational awards to eligible individuals.



Retrospectroscope:

